

RamblinG Rose

RENÉE NANNEMAN



Boho Cascade Quilt designed by: **Renée Nanneman**

Quilt Size: **84½" x 102"** • Skill Level: **Advanced**

Free Pattern Download Available

1384 Broadway, 24th Floor, New York, NY 10018

Tel. (800) 223-5678 • andoverfabrics.com

 andover : makower.uk

12/15/23

Boho Cascade Quilt

Introducing Andover Fabrics new collection:

Rambling Rose by Renée Nanneman. Quilt designed by Renée Nanneman • Quilt finishes 84½" x 102"

This stunning quilt is destined to become an heirloom with its variety of prints, colors, and original setting. Careful attention to placement of the fabrics results in a design that defies the definition of what is a block.

Cutting Directions

Note: Read assembly directions before cutting patches. All measurements are cut sizes and include ¼" seam allowances. A fat ⅛ is a 9" x 20"-22" cut of fabric. A fat ¼ is an 18" x 20"-22" cut. Borders are cut the exact lengths required plus ¼" seam allowances. WOF designates the width of fabric from selvedge to selvedge (approximately 42" wide).

- Fabric A** Cut (7) squares 10", cut in half diagonally twice to make 28 quarter-square triangles
Cut (2) squares 7½", cut in half diagonally to make 4 half-square triangles for corners
Cut (8) squares 6½"
Cut (28) rectangles 3½" x 9½"
Cut (4) rectangles 3½" x 6½"
Cut (32) squares 3½"
- Fabric B** Cut (2) rectangles 3½" x 9½"
Cut (2) rectangles 3½" x 6½"
Cut (4) squares 3½"
- Fabric C** Cut (4) rectangles 3½" x 9½"
Cut (2) rectangles 3½" x 6½"
Cut (6) squares 3½"
- Fabric D** Cut (2) side borders 6½" x 90½", cut lengthwise
Cut (2) top/bottom borders 6½" x 85"
Cut (1) rectangle 3½" x 9½"
Cut (1) rectangle 3½" x 6½"
Cut (4) squares 3½"
- Fabric E** Cut (4) squares 3½"
- Fabric F** Cut (3) rectangles 3½" x 9½"
Cut (1) rectangle 3½" x 6½"
Cut (4) squares 3½"
- Fabric G** Cut (1) square 3½"
Cut (7) squares 3½" (or 3⅜") for HST (Read Step 1 first.)
- Fabric H** Cut (1) square 3½"
- Fabric I** Cut (4) strips 2⅜" x WOF, pieced to make 2 side borders 2⅜" x 81¼"
Cut (4) strips 2⅝" x WOF, pieced to make 2 top/bottom borders 2⅝" x 68"
Cut (2) rectangles 3½" x 9½"
Cut (2) rectangles 3½" x 6½"
Cut (4) squares 3½"
- Fabric J** Cut (2) rectangles 3½" x 9½"
Cut (2) rectangles 3½" x 6½"
Cut (6) squares 3½"

Fabric Requirements

		Yardage	Fabric
Fabric A	setting	2 yards	1196-L
Fabric B	setting	fat ¼	1196-O
Fabric C	setting	fat ¼	1196-T
Fabric D	border	2¾ yards	1197-K
Fabric E	setting	fat ⅛	1197-N
Fabric F	setting	fat ¼	1197-T
Fabric G	setting	fat ⅛	1198-K
Fabric H	setting	fat ⅛	1198-NP
Fabric I	border	1 yard	1198-R
Fabric J	setting	fat ¼	1198-TO
Fabric K	setting	fat ¼	1199-K
Fabric L	setting	fat ⅛	1199-N
Fabric M	setting	fat ¼	1200-G
Fabric N	setting	fat ¼	1200-R
Fabric O	setting	fat ¼	1200-T
Fabric P	setting	fat ⅛	1201-O
Fabric Q	setting	fat ⅛	1201-T
Fabric R	setting	fat ¼	1202-G
Fabric S	border	¾ yard	1202-L
Fabric T	setting	½ yard	1202-P
Fabric U	setting	fat ¼	1202-T
Fabric V	setting	fat ¼	1203-G
Fabric W	setting	fat ¼	1203-O
Fabric X	setting	fat ¼	1204-P
Fabric Y	setting	fat ¼	1204-R
Fabric Z	setting	fat ¼	1204-Y
Binding		¾ yard	1201-O
Backing		8 yards	1196-T

Fabric K Cut (4) rectangles 3½" x 9½"
Cut (2) rectangles 3½" x 6½"
Cut (11) squares 3½"

Fabric L Cut (3) squares 3½"

Fabric M Cut (2) rectangles 3½" x 9½"
Cut (2) rectangles 3½" x 6½"
Cut (5) squares 3½"
Cut (7) squares 3½" (or 3⅜") for HST
(Read Step 1 first)

Fabric N Cut (2) rectangles 3½" x 9½"
Cut (2) rectangles 3½" x 6½"
Cut (5) squares 3½"
Cut (7) squares 3½" (or 3⅜") for HST

Boho Cascade Quilt

Fabric O Cut (3) rectangles $3\frac{1}{2}'' \times 9\frac{1}{2}''$
Cut (3) rectangles $3\frac{1}{2}'' \times 6\frac{1}{2}''$
Cut (7) squares $3\frac{1}{2}''$

Fabric P Cut (8) squares $3\frac{1}{2}''$

Fabric Q Cut (8) squares $3\frac{1}{2}''$

Fabric R Cut (1) rectangle $3\frac{1}{2}'' \times 9\frac{1}{2}''$
Cut (1) rectangle $3\frac{1}{2}'' \times 6\frac{1}{2}''$
Cut (4) squares $3\frac{1}{2}''$

Fabric S Cut (63) squares $3\frac{1}{2}''$ (or $3\frac{3}{8}''$) for HST

Fabric T Cut (6) rectangles $3\frac{1}{2}'' \times 9\frac{1}{2}''$
Cut (4) rectangles $3\frac{1}{2}'' \times 6\frac{1}{2}''$
Cut (10) squares $3\frac{1}{2}''$
Cut (7) squares $3\frac{1}{2}''$ (or $3\frac{3}{8}''$) for HST

Fabric U Cut (2) rectangles $3\frac{1}{2}'' \times 9\frac{1}{2}''$
Cut (2) rectangles $3\frac{1}{2}'' \times 6\frac{1}{2}''$
Cut (7) squares $3\frac{1}{2}''$
Cut (7) squares $3\frac{1}{2}''$ (or $3\frac{3}{8}''$) for HST

Fabric V Cut (3) rectangles $3\frac{1}{2}'' \times 9\frac{1}{2}''$
Cut (3) rectangles $3\frac{1}{2}'' \times 6\frac{1}{2}''$
Cut (7) squares $3\frac{1}{2}''$

Fabric W Cut (3) rectangles $3\frac{1}{2}'' \times 9\frac{1}{2}''$
Cut (1) rectangle $3\frac{1}{2}'' \times 6\frac{1}{2}''$
Cut (8) squares $3\frac{1}{2}''$
Cut (7) squares $3\frac{1}{2}''$ (or $3\frac{3}{8}''$) for HST

Fabric X Cut (2) rectangles $3\frac{1}{2}'' \times 9\frac{1}{2}''$
Cut (2) rectangles $3\frac{1}{2}'' \times 6\frac{1}{2}''$
Cut (7) squares $3\frac{1}{2}''$
Cut (7) squares $3\frac{1}{2}''$ (or $3\frac{3}{8}''$) for HST

Fabric Y Cut (2) rectangles $3\frac{1}{2}'' \times 9\frac{1}{2}''$
Cut (2) rectangles $3\frac{1}{2}'' \times 6\frac{1}{2}''$
Cut (8) squares $3\frac{1}{2}''$
Cut (7) squares $3\frac{1}{2}''$ (or $3\frac{3}{8}''$) for HST

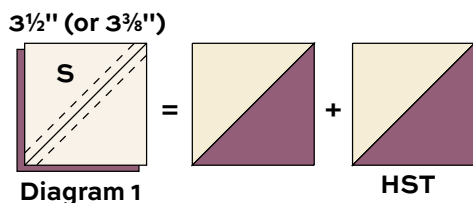
Fabric Z Cut (2) rectangles $3\frac{1}{2}'' \times 9\frac{1}{2}''$
Cut (2) rectangles $3\frac{1}{2}'' \times 6\frac{1}{2}''$
Cut (6) squares $3\frac{1}{2}''$
Cut (7) squares $3\frac{1}{2}''$ (or $3\frac{3}{8}''$) for HST

Binding Cut (8) strips $2\frac{1}{2}'' \times$ WOF for binding

Backing Cut (3) lengths $38'' \times 95''$, pieced to fit quilt top with overlap on all sides

Making the Quilt

1. The pieced middle borders are made with half-square triangles (HST). Use your favorite method to make HST that finish $2\frac{1}{2}''$, or follow these directions. Fabric squares cut $3\frac{1}{2}''$ will be trimmed after stitching. Cut the squares $3\frac{3}{8}''$ if you do not wish to trim later. Draw a diagonal line on the wrong side of the Fabric S squares. With right sides together, position the marked square on top of a colored square. Stitch $\frac{1}{4}''$ on each side of the diagonal line (Diagram 1). Cut apart on the drawn line. Press the seam allowance toward the darker fabric. Make a total of 126 HST. Trim each square to $3''$ if needed. Set aside for Step 4.



2. Referring to the Quilt Assembly, arrange the colored patches and Fabric A patches in diagonal rows on a large flat surface or design wall. We suggest that you begin at the top left corner, and work on two adjacent rows at a time to avoid confusion. Stand back to be certain that the fabrics are placed correctly. Once you are satisfied, join the patches into two rows. Join these two rows to make a “double” row. Add a Fabric A quarter-square triangle at each end. Place the double row back on the design wall.

Note: The top double rows and the bottom double rows are pieced the same (different fabrics, of course), and the bottom section is simply rotated to make the design. Make 7 double rows for the top and 7 double rows for the bottom. For the center three rows, sew assembled strips together as shown. Join the double rows into sections, and then join the sections to make the quilt. It should measure $64\frac{1}{4}'' \times 81\frac{1}{4}''$ (raw edge to raw edge). Trim edges of quilt if needed, leaving $\frac{1}{4}''$ seam allowances all around.

3. Sew the long Fabric I borders to the quilt’s sides. Sew shorter borders to the top and bottom.

Boho Cascade Quilt

4. Arrange 34 HST along each side in the order shown, or position them as you wish. They are somewhat randomly placed. Position 29 HST at the top and 29 at the bottom. Once you are pleased with the arrangement, join the HST to make the borders. Sew longer pieced borders to the sides and shorter borders to the top and bottom.

5. Likewise, sew Fabric D borders to the sides, and then to the top and bottom.

Finishing the Quilt

6. Layer the quilt with batting and backing and baste. Quilt in the ditch around borders and patches. Quilt around the printed motifs as you wish. Bind to finish the quilt.



Rambling Rose

RENÉE NANNEMAN



1196-L



1196-O



1196-T



1197-K



1197-N



1197-T



1198-K



1198-NP



1198-R



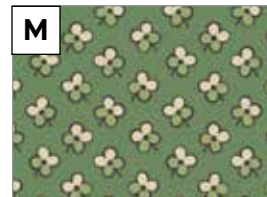
1198-TO



1199-K



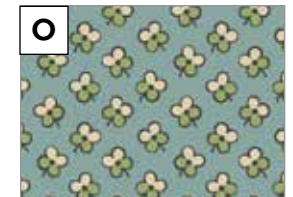
1199-N



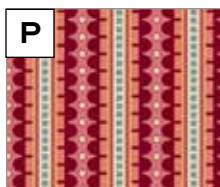
1200-G



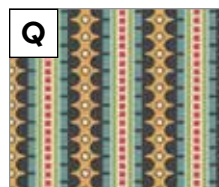
1200-R



1200-T



1201-O



1201-T



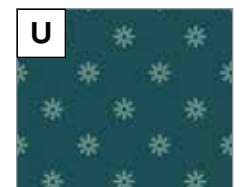
1202-G



1202-L



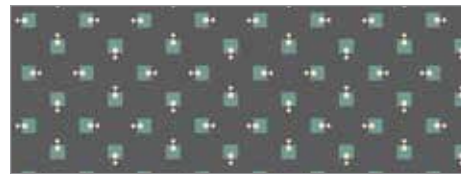
1202-P



1202-T



1203-G



1203-K*



1203-O



1204-C*



1204-P



1204-R



1204-Y

*Indicates fabrics not used in quilt pattern. Fabrics shown are 50% of actual size.

Free Pattern Download Available

1384 Broadway, 24th Floor, New York, NY 10018

Tel. (800) 223-5678 • andoverfabrics.com